

## Spur Gear Cutting Attachment for Lathe Machine: A Key to Increased Productivity, Decreased Cost and Floor Area Requirement

Pullagura Pushpalatha<sup>1</sup>, G. Suresh<sup>2</sup>, K. Balaji<sup>2</sup>, P. Kumar Babu<sup>3</sup>

<sup>1</sup>P.G. Student, Department of Mechanical Engineering, VEMU Institute of Technology, Chittoor District, Andhra Pradesh, India

<sup>2</sup>Associate Professor, Department Of Mechanical Engineering, VEMU Institute Of Technology, Chittoor District, Andhra Pradesh, India

<sup>3</sup>Professor, Department Of Mechanical Engineering, Pragati Engineering College, Surampalem, Kakinada East Godavari District, Andhra Pradesh, India

**\*Corresponding Author:** Pullagura Pushpalatha, P.G. Student, Department of Mechanical Engineering, VEMU Institute of Technology, Chittoor District, Andhra Pradesh, India

### ABSTRACT

Lathe is a very important manufacturing subsystem in many sectors. Even though it is a versatile machine, it has some limitations while performing certain operations like a spline, gear cutting. The use of milling machines in the production of spline and gear cutting is well recognized. If an attachment on general purpose lathe is made available, the cost of production of a product could be reduced. A CNC machine can perform the many operations more effectively and the human involvement is limited. However, due to increase in the cost of a CNC machine and the indirect costs associated with these machines, they are considered as white elephants in a certain class of manufacturing units. The main objective of this paper is to Design and Analysis of Spur gear cutting attachment for Lathe machine to increased Productivity, Increased flexibility of Lathe, Decreased Cost, and Floor area Requirement. The developed design is modelled by using CATIA V5 and the model is simulated in Solid works motion simulator software. By using ANSYS Software we tested the strength of the spur gear cutting attachment in Lathe machine.

**Keywords:** Spur Gear, Lathe machine, Milling machine, Optimization, Ansys

### INTRODUCTION

Workshops and small-scale industries are heavily constrained to use general purpose machines due to financial limitations. Machines such as Lathes and Milling machines are versatile with these groups as they required minimum funding and are easy to maintain. Researchers always attempt to help these industries through innovative methods to enlarge the ambit their production using these general purpose machines. A variety of attachments are already in use by these industries.

Even though various attachments like keyways, slotting, internal keyway, grinding wheel and eccentric turning for lathe machine. Still, it is facing some difficulties like machining of gear cutting and sp lines on the shaft. To overcome this difficulty it is necessary to design an attachment for the lathe. Which is able to overcome these difficulties and flexible to use it in standard lathes.

### LITERATURE REVIEW

S. Amar conducted a reviewed on the attachment is a good tool for contemporary industrialization which is able to undoubtedly facilitate to enhance the productivity and can facilitate the industries to enhance the standard of keyway operation. The compact style of attachment can facilitate simple operation of the keyway.

Dr. G. Naga Malleshwar Rao conducted a study on overview of eccentric turning attachment. with the help of V-block, studs, center plate, center rod, base plate, nuts, scale etc., they have implemented this design successfully and executed this attachment might helpful to reduce time while performing desire operation.

M. Narasimha1 review done adjustable multi-spindle attachment. The main motto of this project is machining 3 t-slots at a time, which is in the range of 40 mm to 320 mm. In initial

## Spur Gear Cutting Attachment for Lathe Machine: A Key to Increased Productivity, Decreased Cost and Floor Area Requirement

stage this attachment was designed in CAD model later this attachment was fabricated based on there recent to accomplish. The accomplished of the requirements in the range of 40 mm to 160 mm in a single pass to cut T-slots by implementing three different cutters on an arbor in a milling machine Tool.

J.C.Harbison focused on a milling attachment for lathes. He modified the attachment that cutting tool fitted to the arbor and that is supported by chuck and tailstock. He modified direct indexing to compound indexing.

J.W.Bracus states that a gear cutting attachment. He was studied and modified smith's attachment and he tried to initiate indexing in the attachment.

T.E.Smith said that a keyway and gear cutting attachment for lathes. He is the initiator for this concept he builds a gear and keyway cutting attachment for lathe by adding another motor to the cutting tools and chuck modified as holding and indexing device but this attachment is heavy and complex.

### MILLING

Milling is a machining operation that will do machining by fixing workpiece at a certain position and then doing operation by guiding cutting tool towards the workpiece. That is a

vertical milling operation there are different milling operation is available in now a days and most of them are operated by CNC machines to get much precision and reduce time in production.

### MACHINING

Machining covers a good style of actions that take a material and switch it into one thing else. It is outlined as a controlled method that takes the material and transforms it into a desired final form and size. This may embrace material-removal as seen with such actions as cutting, drilling, boring, or material addition. Although machining is most ordinarily used with the metal product, machining can even be through with materials like wood, ceramic, plastic, and composite materials.

### SPUR GEAR

Spur gears consist of parallel teeth to the axis and are utilized for transferring power between two parallel shafts. They are simple to manufacture and low cost. They need the most effective potency and smart accuracy rating. They are used in high speed and high load application altogether varieties of trains and an honest sort of velocity ratios. Hence, they perceive wide applications right from clocks, organization gadgets, motorcycles, vehicles, and railways to aircrafts.

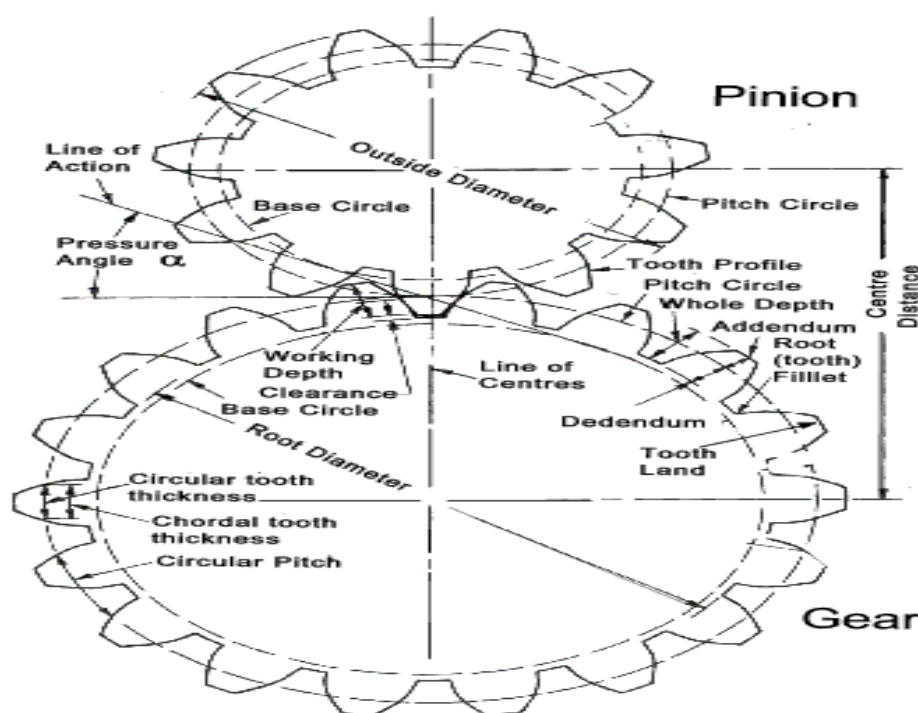
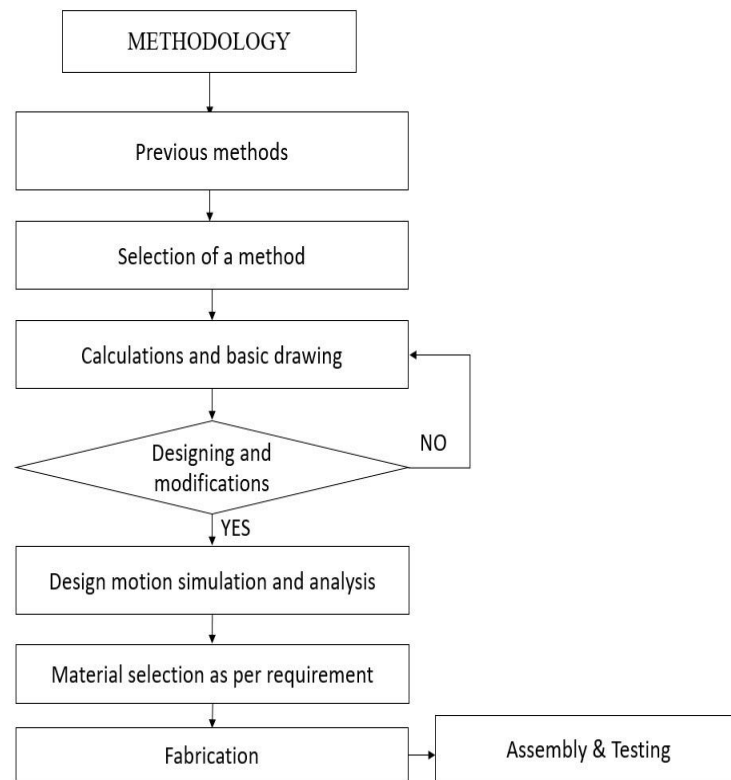


Figure1. Spur gear

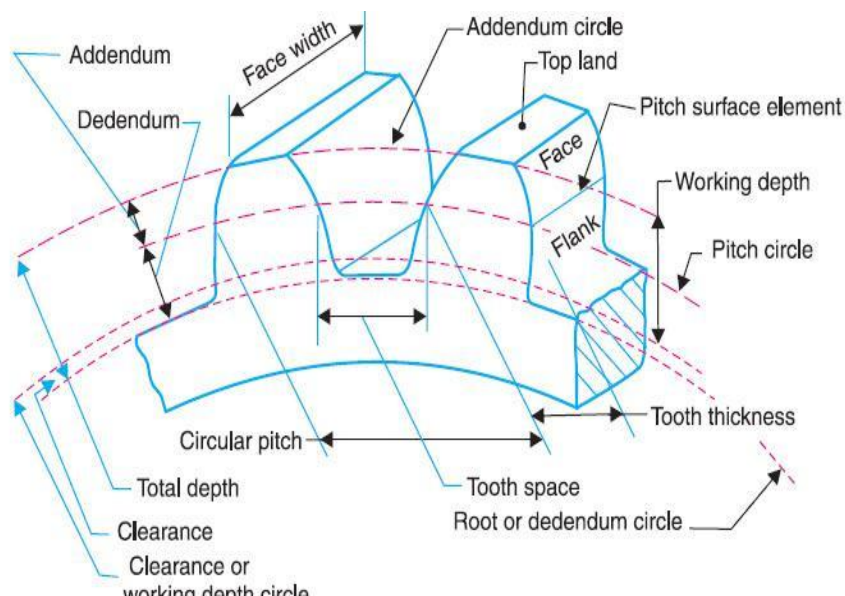
## METHODOLOGY



**Figure2.** Methodology flow chart

## CALCULATIONS

### Spur Gear Creation



**Figure3.** Spur gear nomenclature

Whole Depth (W)	= $2.157/P$	Circular Pitch (CP)	= $3.1416/P$
Addendum (a)	= $1/P$	Diametric Pitch (P)	= $N/D1$
Tooth Radius(R)	= $\frac{3}{4}(CP)$	Teeth number (N)	= $D1 \times D$
Pitch Diameter (D1)	= $N/P$	Dedendum (d)	= $W-a$

## Spur Gear Cutting Attachment for Lathe Machine: A Key to Increased Productivity, Decreased Cost and Floor Area Requirement

$$\text{Outside Diameter (D)} = (N+2)/P = 3.922 \text{ mm}$$

$$\text{Chordal Thickness (T)} = D1 \sin(90/N)$$

Work piece diameter 50 mm

For this work piece if number of teeth 18 then the gear parameters will be

$$1) \text{ Outside Diameter } D = (N+2)/P$$

$$\text{Outside Diameter } D = 50 \text{ mm}$$

$$\text{Teeth number} = 18$$

$$50 = (18+2)/P$$

$$P = 20/50$$

$$= 0.4 \text{ mm}$$

$$2) \text{ Pitch Diameter } D1 = N/P$$

$$P = 0.4$$

$$D1 = 18/0.4$$

$$= 45 \text{ mm}$$

$$3) \text{ Addendum } a = 1/P$$

$$= 1/0.4$$

$$= 2.5 \text{ mm}$$

$$4) \text{ Dedendum } d = w - A$$

$$5) \text{ Whole Depth } W = 2.157/P$$

$$= 2.157/0.4$$

$$= 5.3925$$

$$D = 5.3925 - 2.5$$

$$= 2.8925 \text{ mm}$$

$$6) \text{ Circular Pitch } CP = 3.1416/P$$

$$= 3.1416/0.4$$

$$= 7.854 \text{ mm}$$

$$7) \text{ Tooth Radius } R = \frac{3}{4}(CP)$$

$$= \frac{3}{4}(7.854)$$

$$= 2.94 \text{ mm}$$

$$8) \text{ Module } m = D1/N$$

$$= 45/18$$

$$= 2.5$$

$$9) \text{ Chordal thickness } T = D1 \sin(90/N)$$

$$= 45 \sin(90/18)$$

Work piece diameter 50 mm

For this work piece if number of teeth 24 then the gear parameters will be

$$1) \text{ Outside Diameter } OD = (N+2)/P$$

$$\text{Outside Diameter} = 50 \text{ mm}$$

$$\text{Teeth number} = 24$$

$$50 = (24+2)/P$$

$$P = 26/50$$

$$= 0.52 \text{ mm}$$

$$2) \text{ Pitch Diameter } D1 = N/DP$$

$$P = 0.52$$

$$D1 = 24/0.52$$

$$= 46.15 \text{ mm}$$

$$3) \text{ Addendum } a = 1/DP$$

$$= 1/0.52$$

$$= 1.92 \text{ mm}$$

$$4) \text{ Dedendum } d = w - A$$

$$5) \text{ Whole Depth } W = 2.157/P$$

$$= 2.157/0.52$$

$$= 4.15 \text{ mm}$$

$$d = 4.15 - 1.92$$

$$= 2.23 \text{ mm}$$

$$6) \text{ Circular Pitch } CP = 3.1416/P$$

$$= 3.1416/0.52$$

$$= 6.04 \text{ mm}$$

$$7) \text{ Tooth Radius } R = \frac{3}{4}(CP)$$

$$= \frac{3}{4}(6.04)$$

$$= 4.53 \text{ mm}$$

$$8) \text{ Module } m = D1/N$$

$$= 46.15/24$$

$$= 1.922$$

$$9) \text{ Chordal thickness } T = D1 \sin(90/N)$$

$$= 46.15 \sin(90/24)$$

$$= 26.38 \text{ mm}$$

## MODEL DEVELOPMENT

The model was developed by Solid works software and is imported to ANSYS software for carrying out further analysis and it is shown below.



## Spur Gear Cutting Attachment for Lathe Machine: A Key to Increased Productivity, Decreased Cost and Floor Area Requirement

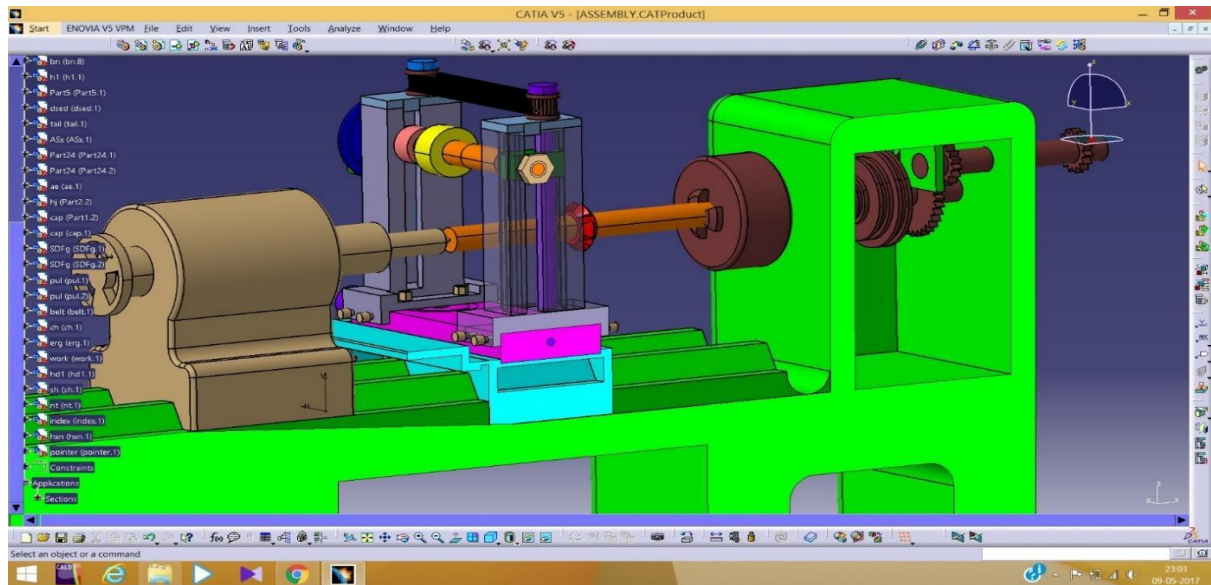


Figure4. Modified model

### MOTION SIMULATION

All motions are applied to the assembly parts and the final animated video was recorded. Motions applied to the assembly parts are illustrated in below table.

Table1. Motion simulation details

S.NO	PARTS	X linear (mm)	X rotation (RPM)	Y linear (mm)	Y rotation (RPM)	Z linear (mm)	Z rotation (RPM)
1	Cross slide	-200	0	0	0	0	0
2	Centers	0	0	0	0	-100	0
3	Cross slide	0	0	150	0	0	0
4	chuck	0	600	0	0	0	0
5	other	0	0	0	0	0	0

All parameters are taken from general purpose lathe and milling machine now these values will be applying on the modified model assembly structure and analyzed by using ansys software.

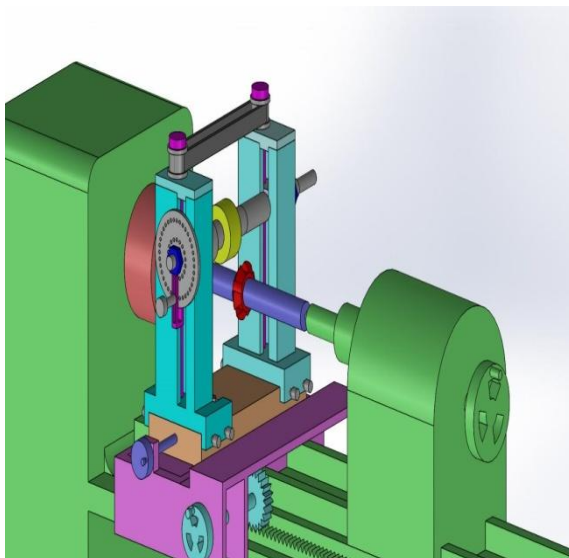


Figure5. Simulation frame image A

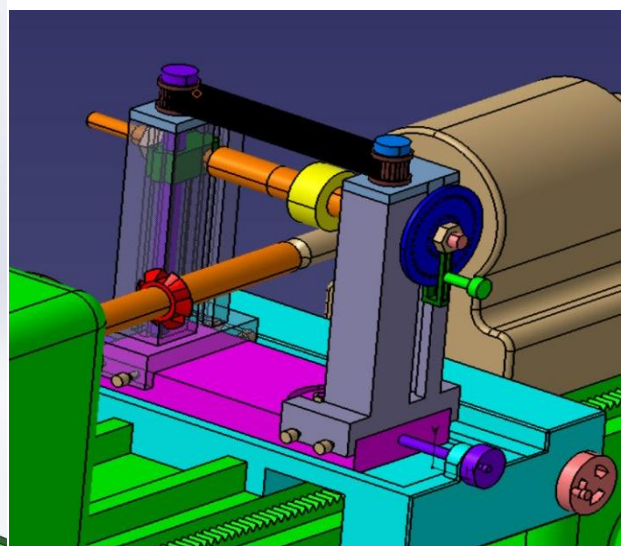


Figure6. Simulation frame image B

### SIMULATION CALCULATIONS

Hence stress concentration factor  $F_1 (\alpha_c) = \frac{\sigma_{max}}{\sigma}$

## Spur Gear Cutting Attachment for Lathe Machine: A Key to Increased Productivity, Decreased Cost and Floor Area Requirement

$$= \frac{247}{7.76} = 31.8$$

Hence stress concentration factor  $F_2 (\alpha_o) = \frac{\sigma_{max}}{\sigma}$

$$= \frac{247}{77.87} = 3.17$$

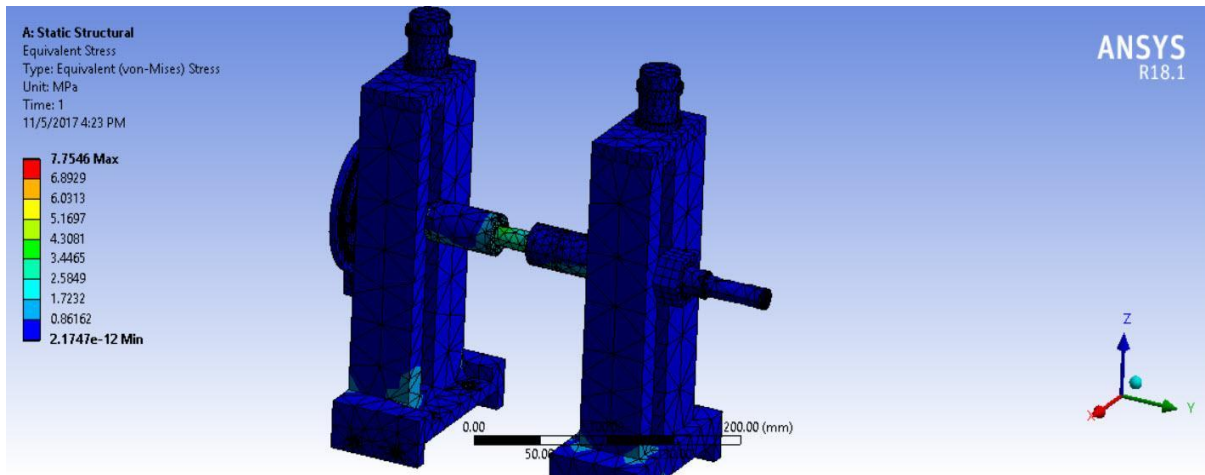


Figure7. Equivalent elastic stress in MPa

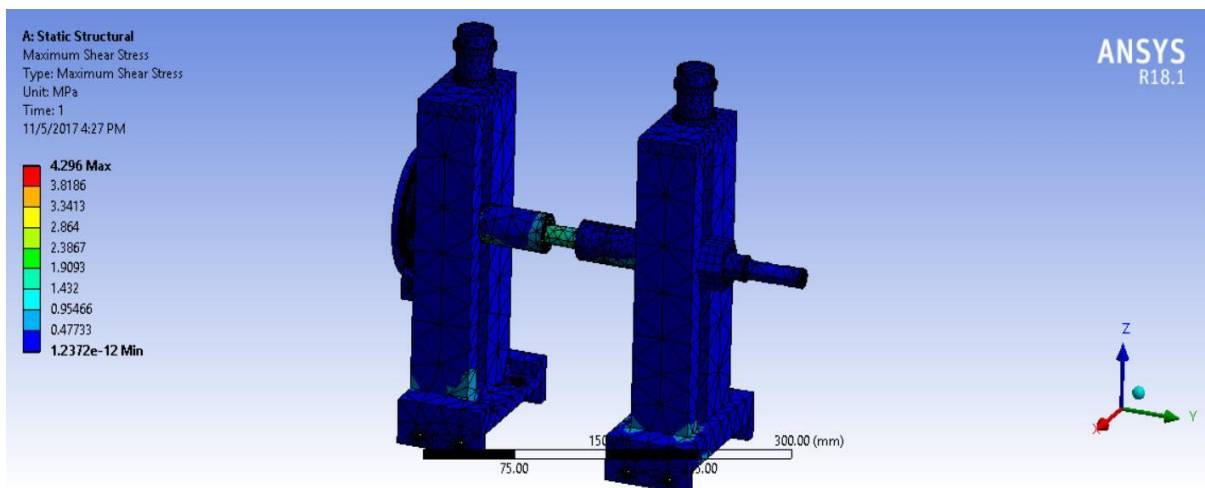


Figure8. Max shear stress in MPa

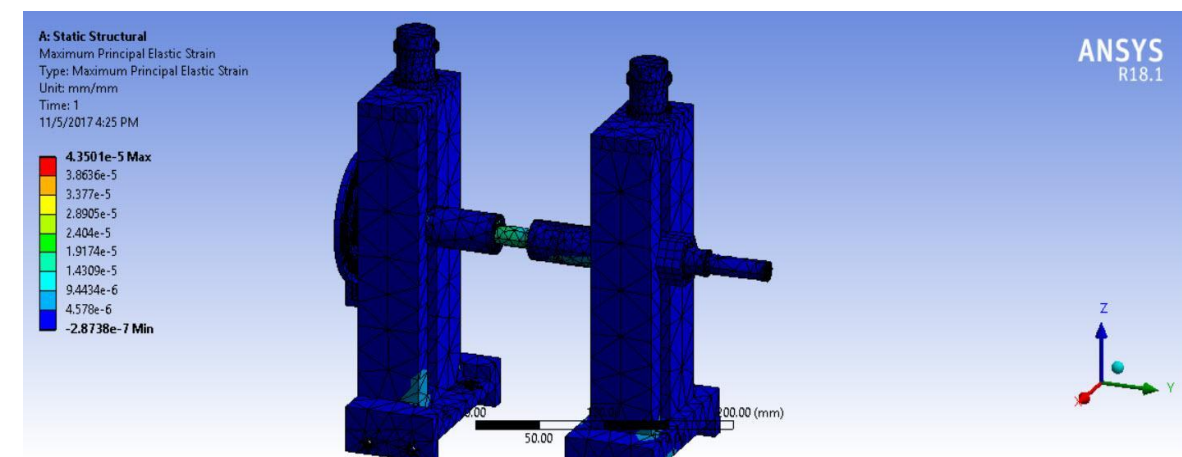


Figure9. Maximum principal elastic strain

## CONCLUSION

The following conclusion can be drawn

- A lot of investment is saved instead of buying a milling machine.
- Produced samples might competitive with milling accuracy.

## Spur Gear Cutting Attachment for Lathe Machine: A Key to Increased Productivity, Decreased Cost and Floor Area Requirement

- Cost of manufacturing is also reduced.
- Floor area requirement is also reduced.
- Tool life and productivity can be increased.
- Flexible in operation.
- Simple in operation and no need for a skilled operator.
- Good accuracy can be achieved.

### FUTURE SCOPE

- Other operations can also be incorporated in to the machine.
- Cost can also be reduced to some extent by manufacturing it on a mass scale.

### REFERENCES

- [1] S. Amar and Bhandare, Design and Development of Keyway Milling Attachment for Lathe Machine, International Journal of Advance Research in Engineering, Science & Technology, vol. 4, pp. 10-18, Mar. 2017.
- [2] Rana Mihir, Rohit Hardik, Patel Abhishek, Raj Dhavalsinh, Mistry Arpit and Maitreya Pandya, Designing and Fabrication of Slotting Attachment for Lathe, International Journal of Advance Research in Engineering Science & Technology, vol. 4, Issue 3, Mar. 2017.
- [3] Shakeel A Sherkar, Atul A. Yamagar, and Amar S Bhandare, Development of Internal Keyway Attachment for Lathe Machine, International Journal of Engineering Research and Technology, vol. 10, Nov. 2017.
- [4] Darshan Attarde, Anand Chavda, Swanand Borkar and Rohan Deogharkar, Design and Fabrication of Grinding Wheel Attachment On Lathe Machine, International Journal of Mechanical Engineering and Technology, vol. 7, Issue 4, pp.281-288, July 2016.
- [5] Abhishek M. Kawade, Shreyansh S. Chougule, Shantanu R. Shinde, and Pratik P. Kharmale, Design, Analysis, And Manufacturing of a Grinding Attachment On a Center Lathe Machine, International Research Journal of Engineering and Technology, vol. 3, Issue 9, Sep. 2016.
- [6] J.W.Bracus, Gear Cutting Attachment, No:2286709, June 16, 1942.
- [7] J.C.Harbison, Milling Attachment For Lathes, No: 2453315, Nov. 9, 1948.
- [8] S. Gadakh Ramesh, G. Londhepradip, A. Shaikh Bilal and S. Shaikhfiroj, Gear Manufacturing by Using Conventional Lathe Machine, International Journal of Research in Engineering and Technology, ISSN: 2319-1163.
- [9] T.E.Smith, Keyway and Gear Cutting Attachment for Lathes, US; No: 2188447, Jan30, 1940.

### AUTHOR'S BIOGRAPHY

**PULLAGURA PUSHPALATHA**, A final year P.G. (M Tech) Student (Machine Design) of VEMU Institute of Technology, P. Kothakota, Chittoor District. She has done her B Tech in IIIT RGUKT, R.K. Valley in Kadapa district.

**G. SURESH**, Faculty in Mechanical Engineering working as Associate Professor from past 5 years in VEMU Institute of Technology, P. Kothakota, Chittoor District. And M Tech in JNTUA Ananthapur, He had the experiences of the HOD as well as co-ordinator of M Tech students. He is guiding several B Tech and M Tech students and publishing papers in conferences.

**K. BALAJI**, Faculty in Mechanical Engineering working as Assistant Professor from past 4 years in VEMU Institute of Technology, P. Kothakota, Chittoor District. He has done his B Tech and M Tech in SVCET (Autonomous) Chittoor. He had the several experience of Presenting papers/ Posters in various workshops and seminars.

**Dr. P.KUMAR BABU**, working as a Professor & Head in Mechanical Engineering with around 20 years of Teaching and administration with the experience as Principal in Engineering Colleges for 6 years. He also has 3 years of Industrial experience. He has around 20 publications in International and National Journals, 20 publications in Conferences.

**Citation:** Pullagura Pushpalatha, G. Suresh, K. Balaji, P. Kumar Babu (2018). "Spur Gear Cutting Attachment for Lathe Machine: A Key to Increased Productivity, Decreased Cost and Floor Area Requirement". *International Journal of Emerging Engineering Research and Technology*, 6(7), pp.18-24.

**Copyright:** © 2018 Pullagura Pushpalatha, et al. This is an open-access article distributed under the terms of the Creative Commons Attribution License, which permits unrestricted use, distribution, and reproduction in any medium, provided the original author and source are credited.